

## Mushroom knobs internal thread

### Item description/product images



### Description

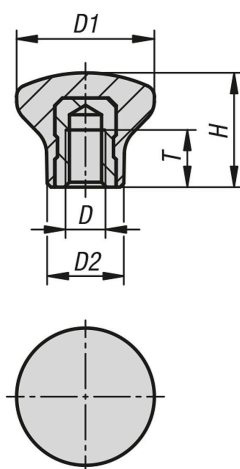
#### Material:

Thermoset PF 31.  
Steel or stainless steel.

#### Version:

Thermoset black, high-gloss polished.  
Trivalent blue passivated steel or bright stainless steel.

### Drawings



### Overview of items

#### Mushroom knobs with internal thread

Order No.	Component material	D	D1	D2	H	T
K1288.1805	steel	M5	18	10	15	7,5
K1288.2106	steel	M6	21	12	17	9
K1288.2506	steel	M6	25	14	21	9
K1288.3308	steel	M8	33	18	29	12
K1288.11805	stainless steel	M5	18	10	15	7,5
K1288.12106	stainless steel	M6	21	12	17	9
K1288.12506	stainless steel	M6	25	14	21	9
K1288.13308	stainless steel	M8	33	18	29	12