

Hinged hook hook wrench with lug

Item description/product images



Description

Material:

Special steel.

Version:

Hardened and annealed in black oxide tone.

Note:

For DIN 1804 slotted round nut, DIN 981 roller bearing nuts and for our levelling sets K0057 / K0097 / K0115 / K0119 / K0692 / K0693 / K0694 / K0695 (two hook wrenches required for the levelling sets).

With rounded sides for better handling.

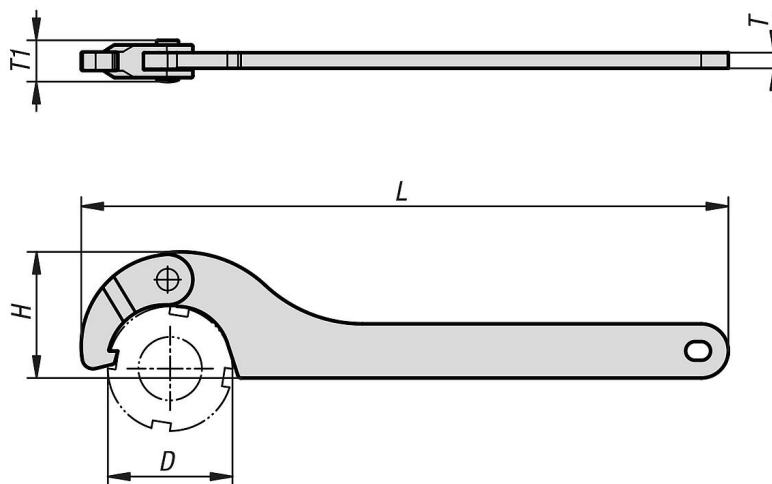
Type of operation:

Additional spring washer ensures smooth running and optimised presetting.
One-handed operation possible.

Advantages:

Longer shaft for higher torque.
Extended hinged hook ensures full wrap-around and safe handling.
Reinforced rivet permits transmission of higher forces.

Drawings



Overview of items

Hinged hook hook wrench with lug

Order No.	D min.	D max.	H	L	for slotted nuts DIN 1804	for bearing locknuts DIN 981	T	T1
K2400.020035	20	35	27	165	M08 - M18	M12 - M20	4	10,5
K2400.035060	35	60	41	210	M30 - M38	M24 - M40	5	12,5
K2400.060090	60	90	57	280	M40 - M60	M42 - M65	6	14,5

Hinged hook hook wrench with lug

Overview of items
